

PRODUCT DATA SHEET

ISOWINDOW UVAU ES

Window Tape one-sided provides a quick and reliable seal and vapour diffusion permeable seal for window connection joints. The tape consists of highly UV-resistant backing that can be plastered over and painted over and is fully coated with a quality acrylic adhesive. ISOWINDOW UVAU ES Window Tape is ideal for window installation that is conform with RAL and ÖNORM B 5320.

FIELD OF APPLICATION

- for window installation outside

ADVANTAGES

- reversed-system
- fingerlift
- 12 months UV-resistance
- resistance to air and wind-driven rain
- soft, flexible structure
- various substrates, e.g. concrete, OSB, wood, vapour barriers
- can be plastered over and painted over

STANDARDS

Meets the requirements of the following standards

- DIN 4108-7
- ÖNORM B 8110-2
- ÖNORM B 5320
- SIA 180
- RAL-compliant

AVAILABLE IN THE FOLLOWING DIMENSIONS

Type	ES	ES
Roll width	80 mm	100 mm
Roll length	25 m	25 m
Split liner	20/60	20/80
Carton	4 Rollen	4 Rollen

PRODUCT DATA

Material composition	PP / PU compound
Colour	Grey with black imprint
sd-value	0,19 m
Temperature resistance	-40 °C - 80 °C
UV-resistance	12 months
Working temperature	-5 °C - 40 °C
Storage	12 months, cool and dry

ISOWINDOW UVAU ES

INFO

ISOWINDOW UVAU ES Window Tape is attached to the window frame after installation. The grey fleece side of the tape can be plastered over and painted over and must face outwards. The wide adhesive surface of the tape is attached to the wall, wood, OSB or vapour barrier.

(1)

Cut the window tape with approx. 12 cm extra length. Pull the masking paper off the adhesive strip and press the adhesive tape carefully onto the window frame.

(2)

Make a fold or loop at the corners. To do so, press the window tape firmly to the window frame as far as the corner, then lift slightly, push the material along and turn 90°.

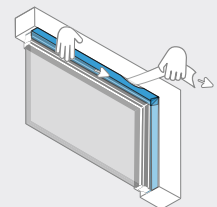
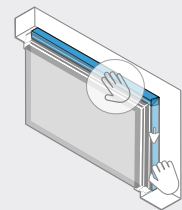
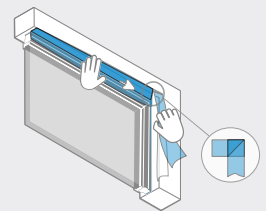
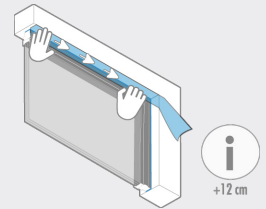
(3)

Now continue to press the window tape onto the window frame. The 'corner' fold seals the corners optimally. Do this at every corner.

(4)

When the window tape is attached to the entire window frame and the joint insulated, pull off the wide masking paper and press onto the window frame.

The more pressure applied, the better the adhesion (AIRSTOP ROLL Pressing Roller, AIRSTOP RAK Plastic Squeegee)!



ISOCELL GmbH & Co KG

Gewerbestraße 9
5202 NEUMARKT AM WALLERSEE | Österreich
Tel.: +43 6216 4108
office@isocell.at

ISOCELL SCHWEIZ AG

Herbergstrasse 29
9524 ZUZWIL | Suisse /Schweiz
Tel.: +41 71 940 06 72
office@isocell.ch

ISOCELL FRANCE

170 Rue Jean Monnet | ZAC de Prat Pip Sud
29490 GUIPAVAS | France
Tél.: +33 2 98 42 11 00
contact@isocell-france.fr

ISOCELL BUREEL BELGIË

Außenborner Weg 1 | Schoppen
4770 AMEL | Belgique
Tel.: +32 80 39 90 58
office@isocell.be

ISOCELL Sverige AB

Torshamnsgatan 35
164 40 KISTA | Sverige
Tel.: +46 10 130 25 00
info@isocell.se

ISOCELL
www.isocell.com